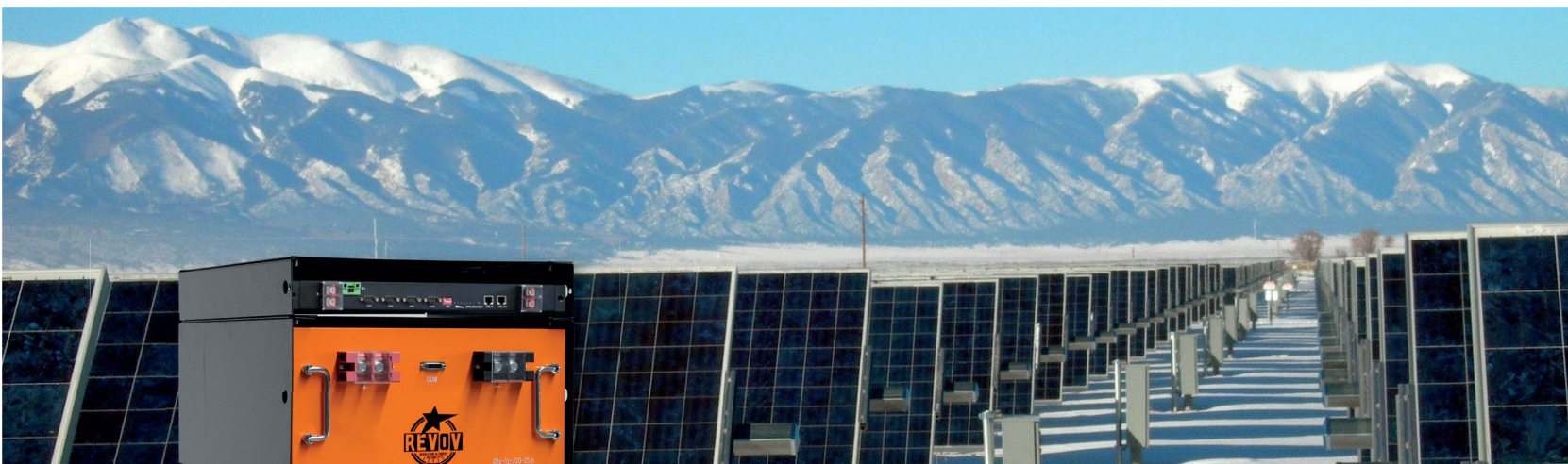




REV OV C8 51.2V 220Ah 11.2kWh



CODE: SYS – LiFe – CA – 220 – 11.2

KEY FEATURES

- **LiFePO₄** chemistry is very safe even if fully charged.
- Reliability – battery designed to operate in almost any environment.
- Supports parallel bus bar connection.
- External BMS (24 or 48V).
- Manufacturing plants comply with the legislation in each country and with international quality standards ISO9001 and Qs9000.
- Residential, Business, Factory, Data Centres or Telecoms Base Station backup.
- Solar, Wind or Hybrid Storage.
- Reduced Peak Usage Charges from the Grid.

FREEDOM FROM DEPENDENCE

WWW.REVOV.CO.ZA

The **REV OV LiFePO₄ 51.2V C8** is an energy storage Lithium Iron Phosphate battery designed to be part of an inverter-controlled energy storage system for residential, business or factory power backup.

REV OV'S superior 16 cell configuration is made up of automotive grade cells, which is designed to withstand harsher conditions, extreme temperatures and with a higher energy density.

The C8 battery utilises cells manufactured by the largest producer of **LiFePO₄** cells supporting renewable storage projects across Europe, UK, Japan and has been a long time supplier to companies like BMW, Volkswagen and Volvo.

WARRANTY

REV OV Batteries (PTY) LTD: 10 years or 3 500 cycles at 1 cycle per day.

DOD When used properly every day the C8 can be safely discharged to 100% of its rated 220Ah capacity. Battery life is shortened if it is discharged beyond its rated Ah capacity.



BMS FUNCTION

- Cell and battery voltage detection.
- RS485 communication interface.
- Battery charge and discharge control (MOSFET).
- Cell, ambient and MOSFET temperature detection.
- Display of the Battery capacity and number of cycles.
- Cells balancing – Equalization of single cells intelligently.
- Watchdog protection for circuits to ensure safe operation.

SPECIFICATIONS

Float Charge	54.5
Charge Voltage (V)	Boost / Absorption charge 55.5
Max Continuous Current (Amps)	100
Recommended Charge	60A
Max Rated Current (Amps)	150
Recommended Current (Amps) to prolong Battery life	125
Max Rated Output Power @ Nominal Voltage	7680
Recommended Continuous Output Power @ Nominal Voltage to prolong battery life	5120
Recommended Recharge Time	2-4hrs
Nominal Voltage	51.2
Capacity (Ah)	220
BMS Size: Length x Width x Height (mm)	483 x 280 x 42
BMS Weight: (kg)	3.6
Battery Size: Length x Width x Height (mm)	457 x 442 x 223
Battery Weight: (kg)	58
Each BMS must have a dedicated fuse (125A) to protect the system	

NOMINAL SPECIFICATIONS

Matched Pair	
Nominal Voltage	(2x25.6) 51.2
Capacity (C/2) (Ah)	220
Energy (C/2) (Wh)	11.2
Maintenance	Charge every 6 months

OPERATING CONDITIONS

Lifetime Warranty	10 years 3500 cycles
Designed Cycle Life	7000+ cycles
Operating Temperature	
Charge:	Zero / 45°C
Discharge:	-20°C / 60°C
Transport regulation compliance	UN3840
Storage temperature	Short term storage: -10°C~+30°C (<3 months, SOC: 20%~60%) Long term storage: 0~+30°C (< 1 year, SOC: 30%~60%)



Enquiries: enquiries@revov.co.za

Enquiries: 010 035 6061

WhatsApp: +27 (0)73 159 5938

Technical Service Desk: 010 035 0680

Technical Service Email: admin@revov.co.za

Unit 1, Cranberry Industrial Park, 1486 Cranberry Street
Honeydew, Roodepoort, 2040 • GPS: 2604'46.9"S 2755'31.7"E



**FREEDOM
FROM DEPENDENCE**
WWW.REV OV CO.ZA